



South Entrance

# COLLABORARÉ

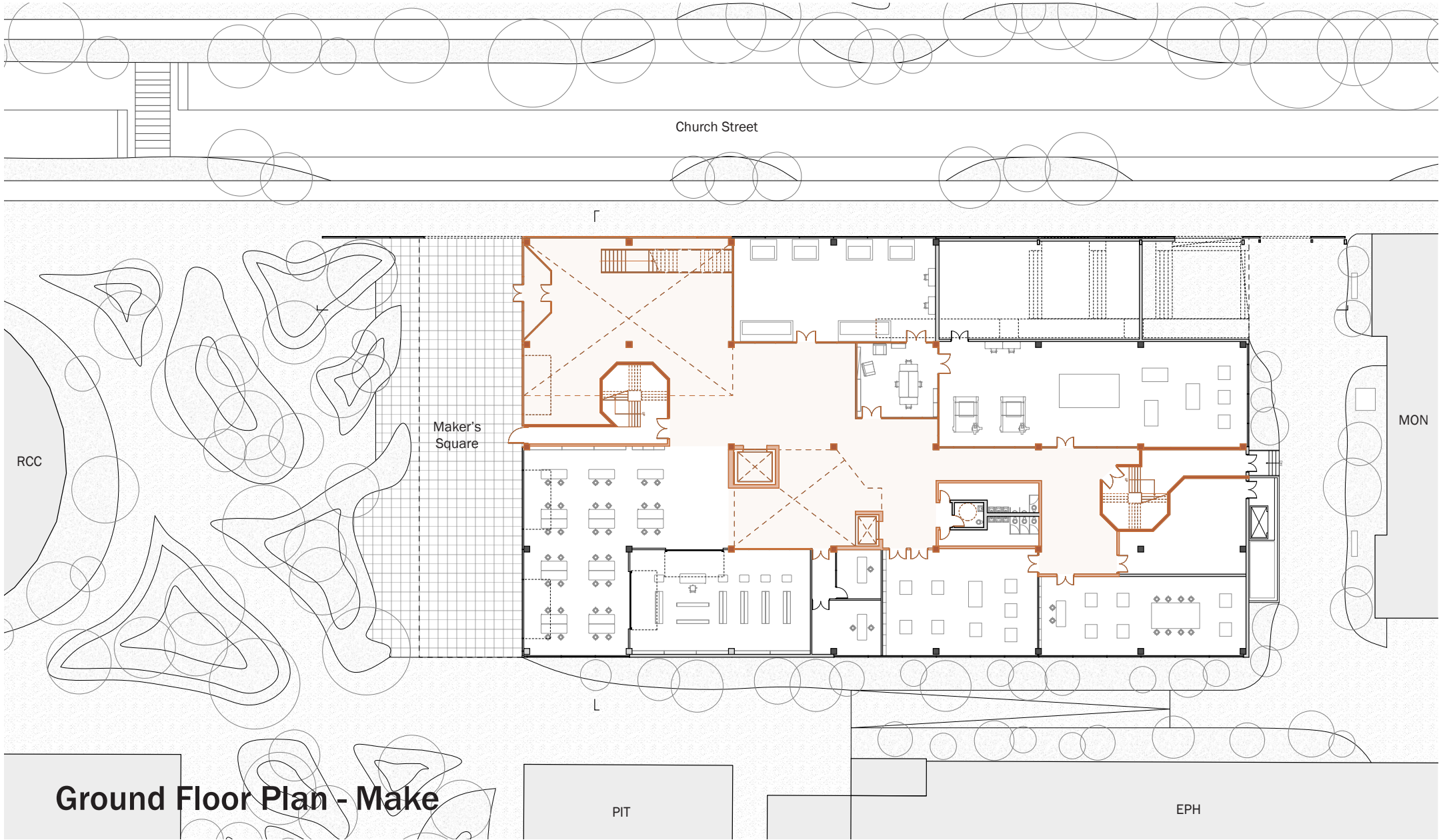
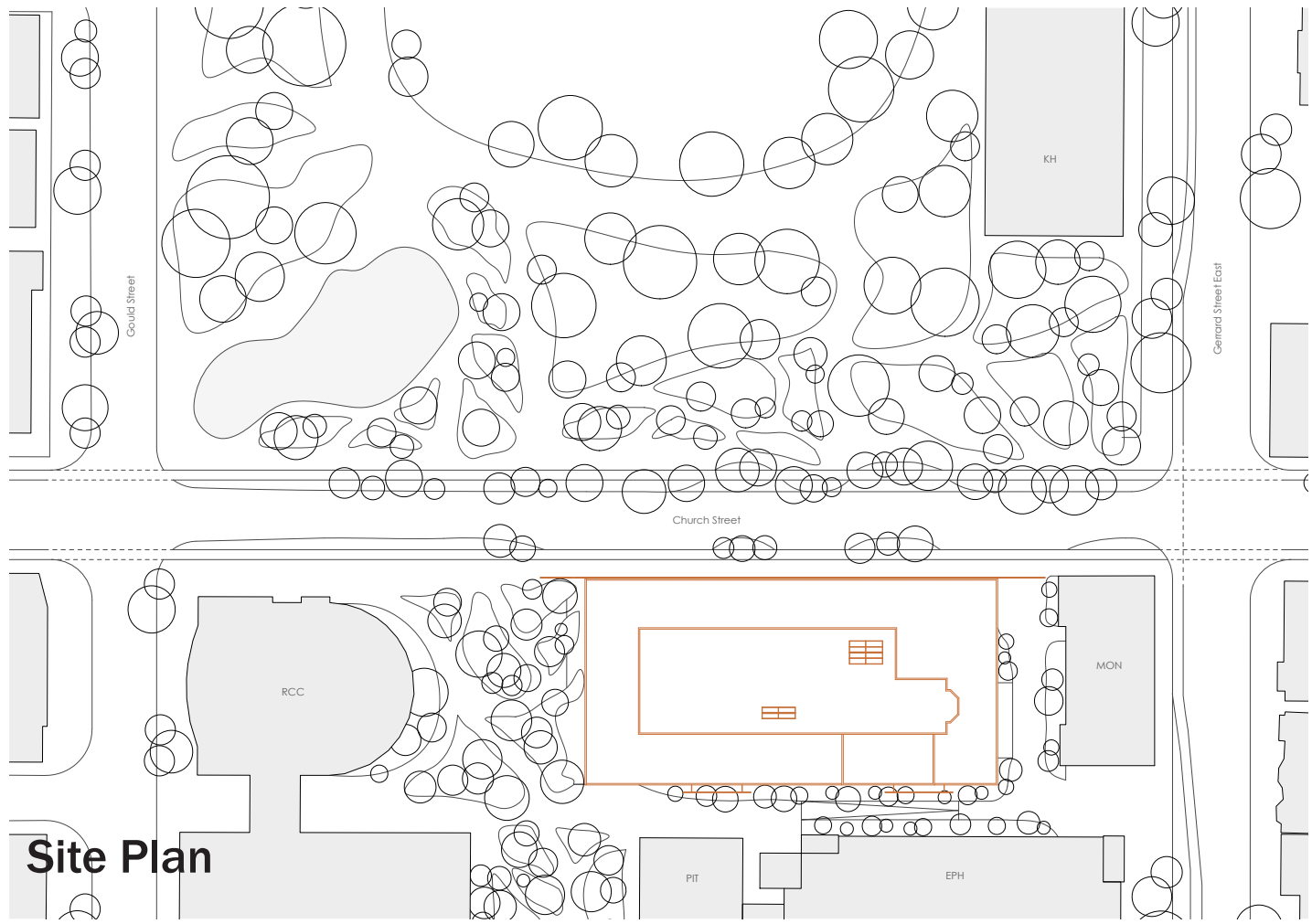
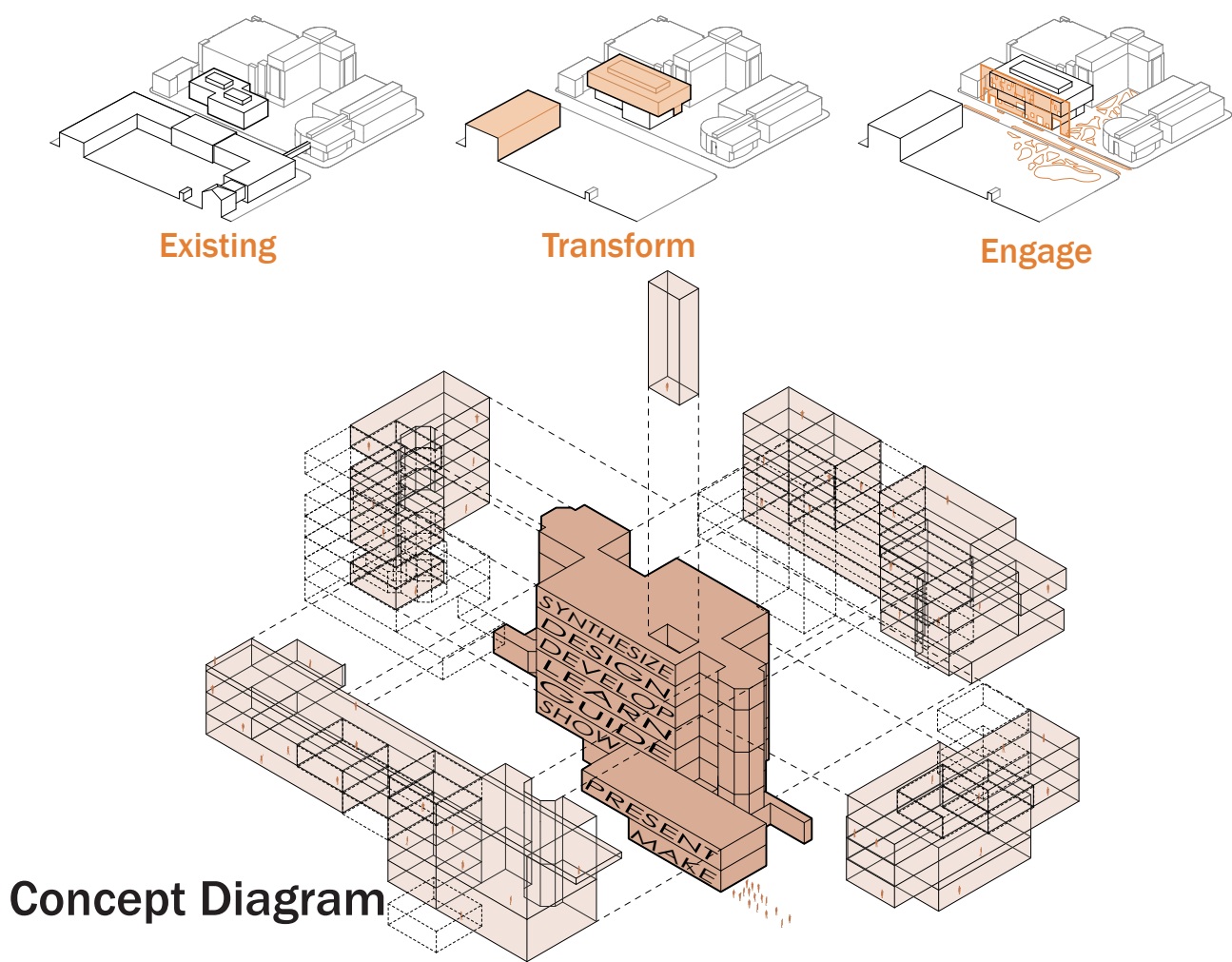
Camila Ramirez Vargas, Massimo Montanari

Collaboraré aims to inspire interactions within our program and the campus, forming a unique architectural experience to inspire creativity and innovation. A central circulation core creates opportunities for interaction, with each level having a specific organization for collaboration with gathering spaces that extend beyond the core and toward the facade, forming unique spatial experiences throughout the building.

Preserving the original DAS building's concrete structure helps to keep the embodied carbon and the addition of mass timber and steel transforms the building into an apparatus for learning through these systems.

A translucent glass wall addresses the perceived boundary of the campus, transforming it into a permeable edge. This allows the actors to weave through the facade, engaging visually and physically with the interior spaces and the street.

By embracing spaces for interaction, DAS will continue to evolve and become a staple to the university, showcasing the architectural collaborative practice.



Ground Floor Plan - Make



Fifth Floor Plan - Develop



Church Street Entrance



Undergraduate Studio